



Laguna Verde RECIRC Pump Discharge Valve Damage

Steve Gallogly
QUG 2014

Overview

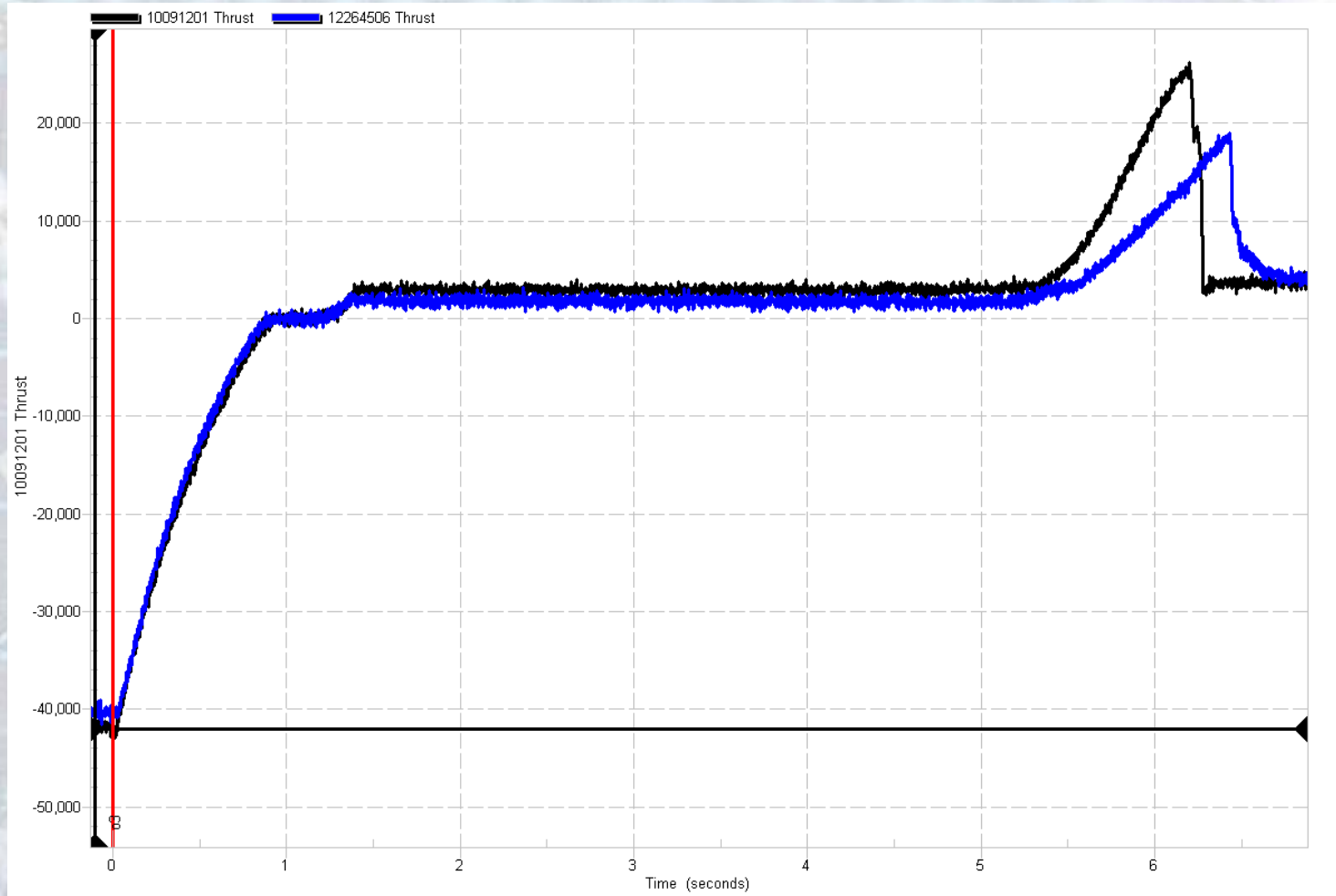
The original installed valves at Laguna Verde were Anchor Darling valves similar to those installed at most US facilities.

Problems with these valves lead to their replacement with Ringo valves in the mid 1990's

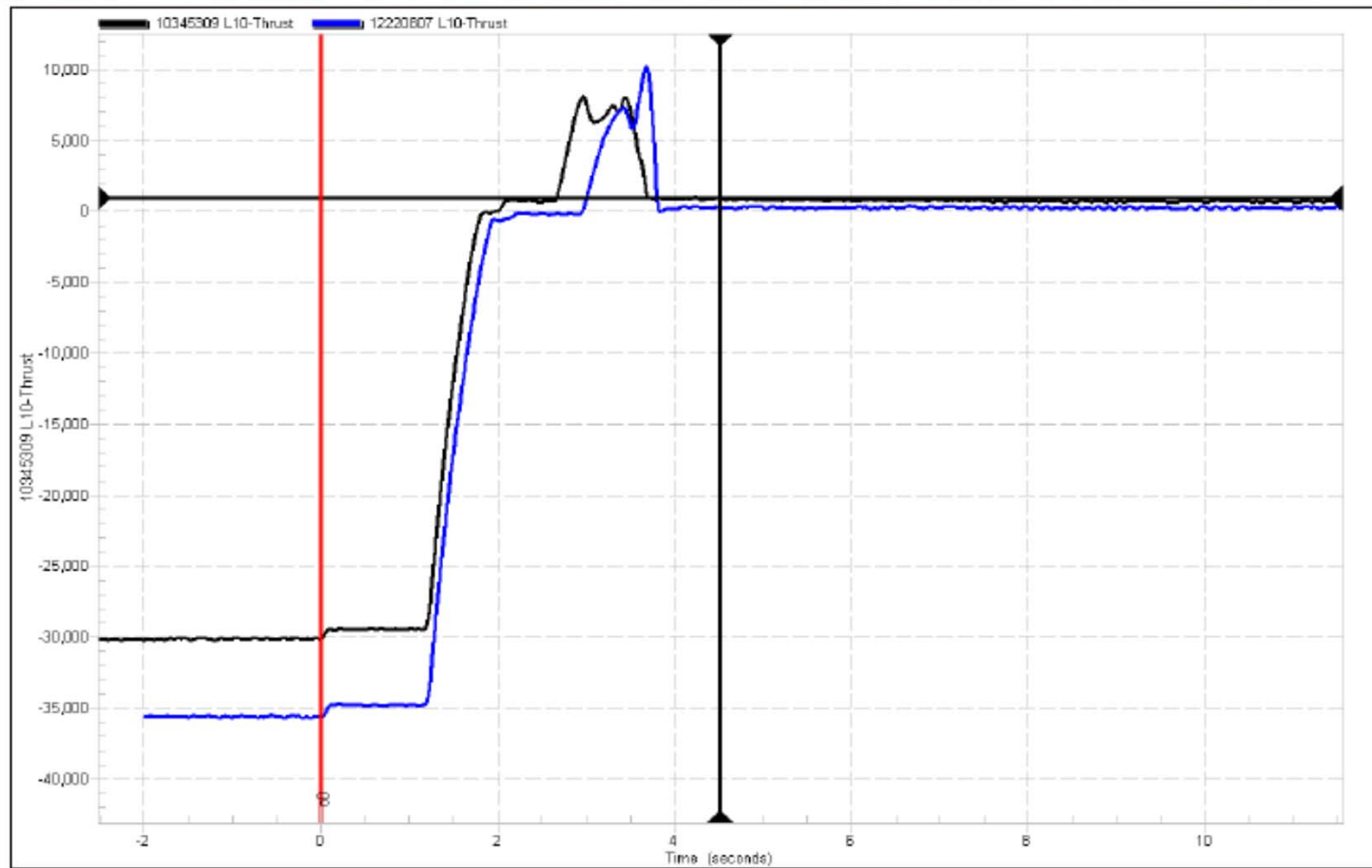
Subsequent diagnostic testing identified apparent changes in T-Head clearance in subsequent outages and this condition started to be trended.

In 2014 the 8827A valve failed to close and the valve had to be rebuilt.

Unit 1 Valve Trend for One Cycle



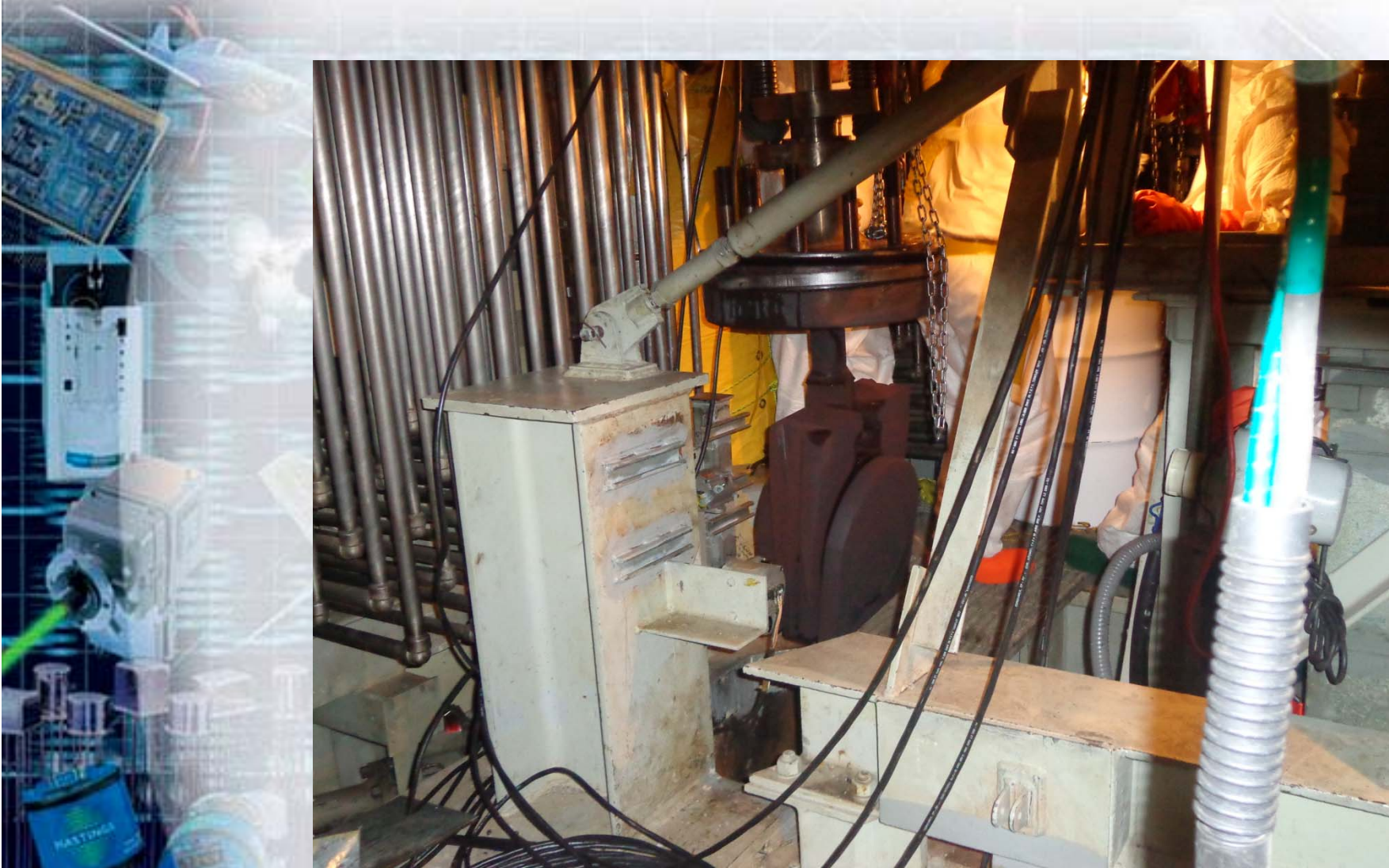
Unit 2 Valve Trend for One Cycle



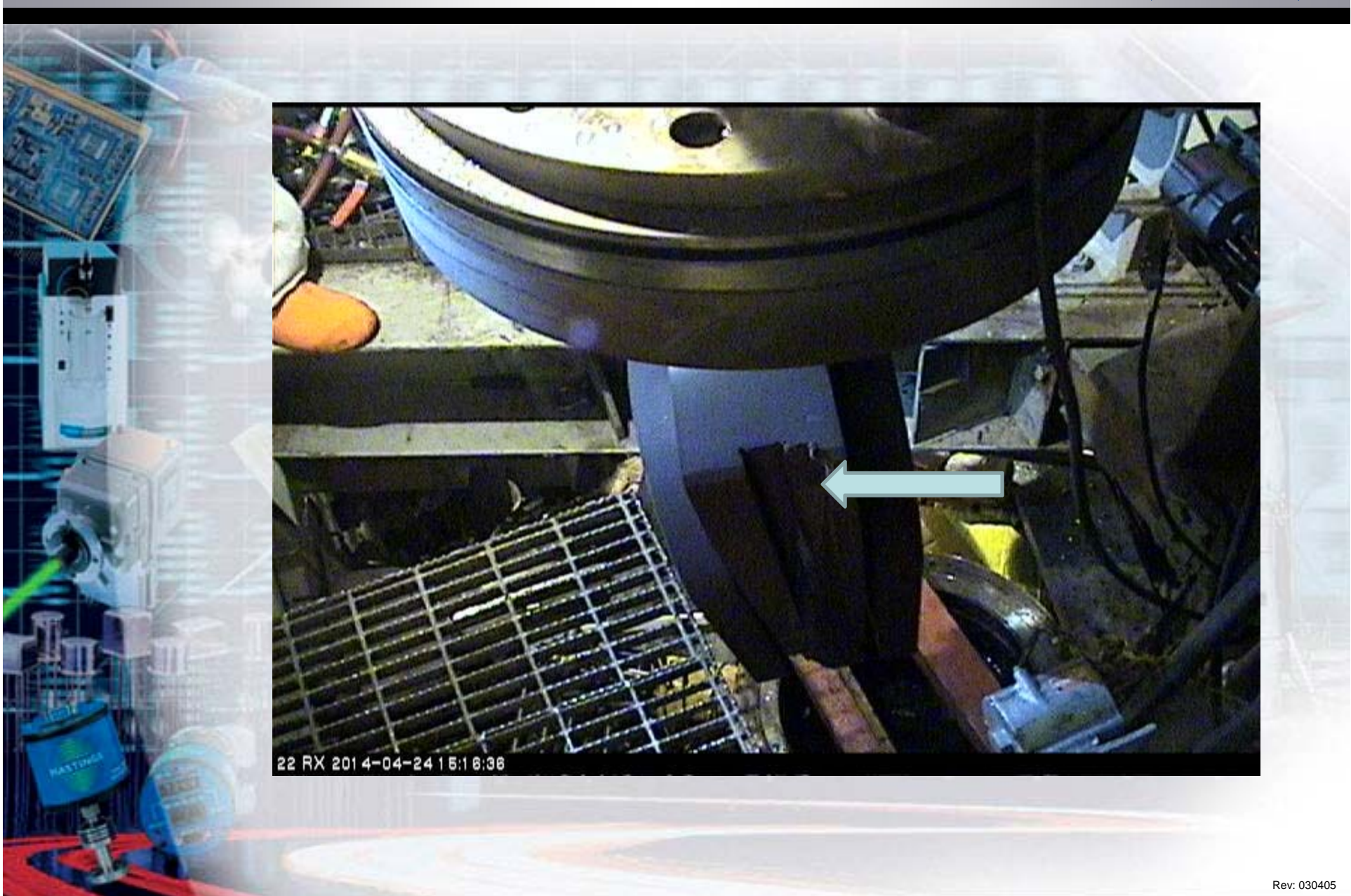
Replacement Valve Disc



Bonnet and Disc Removal



Bonnet and Disc Removal (Cont.)



22 RX 201 4-04-24 15:16:36

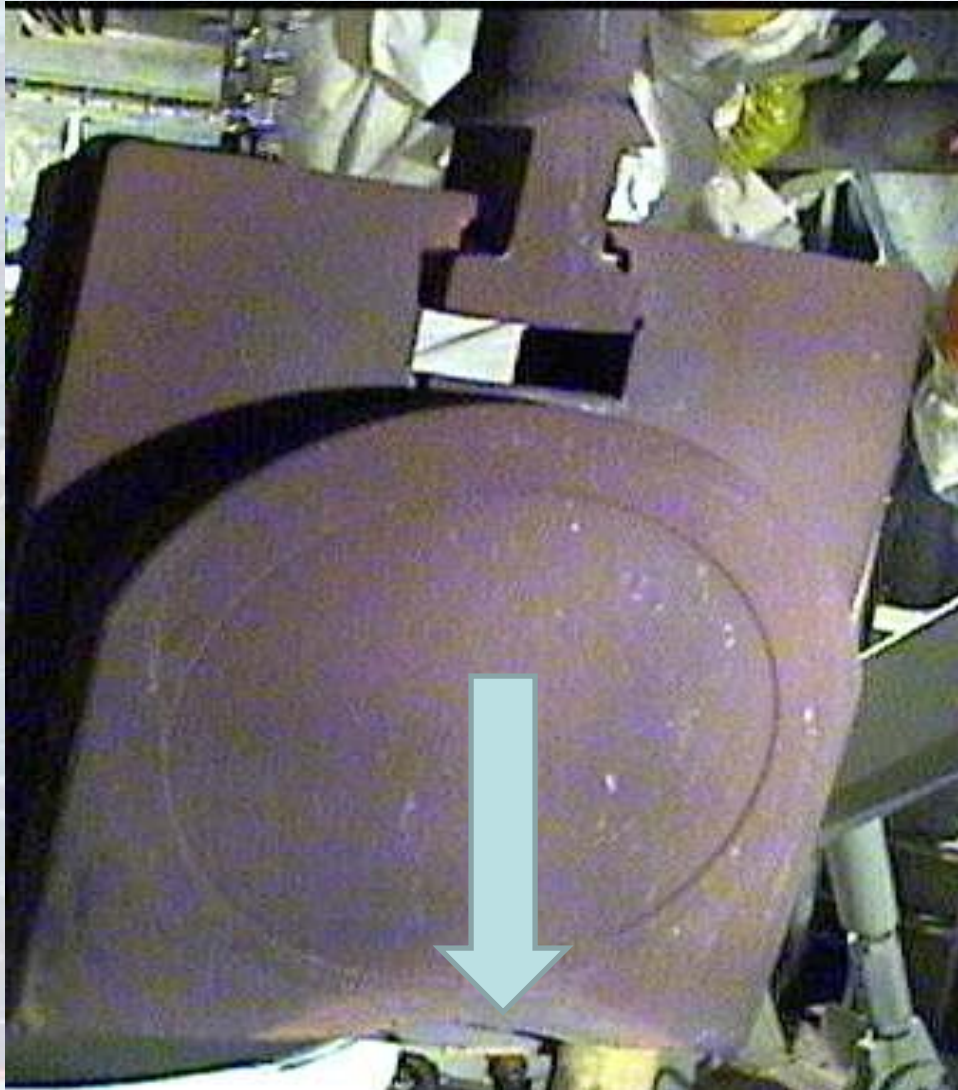
Bonnet and Disc Removal (Cont.)



Damage to the RX Side Valve Seat



Damage to the Lower Edge of the Disc



Comparison of Disc Guides

Damaged Disc Guides



New Disc Guides



T-Head Gap Views

T-Head RX Side



T-Head Pump Side

